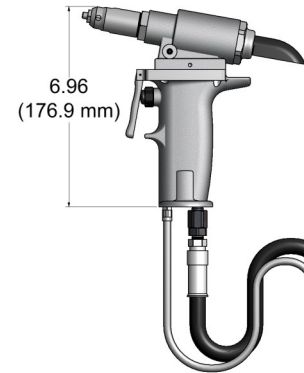
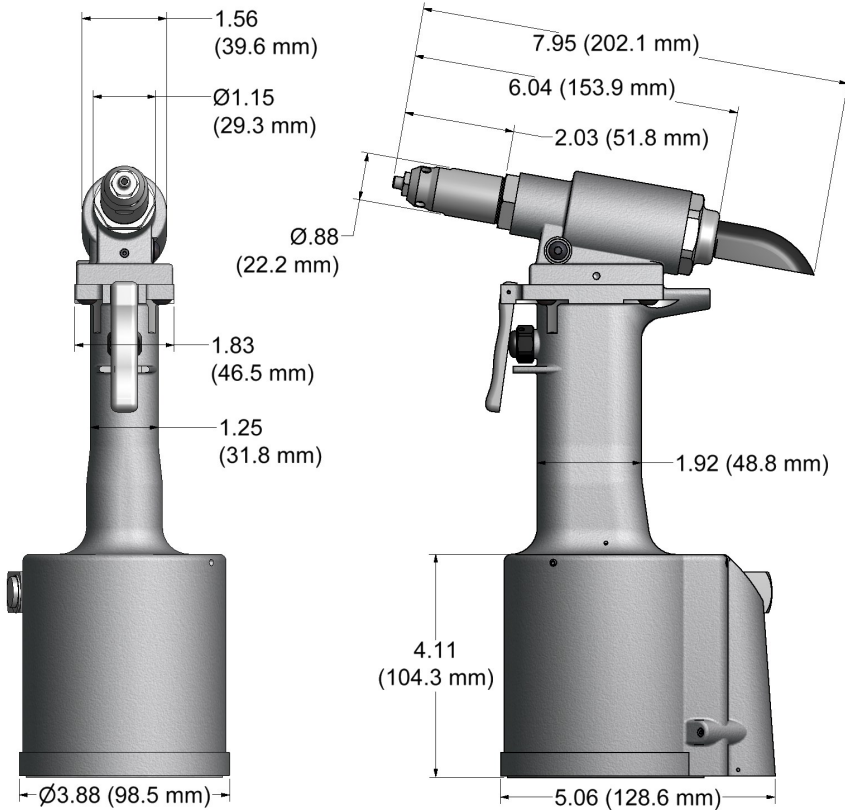


GB703

INSTALLATION TOOL SERIES

GB703

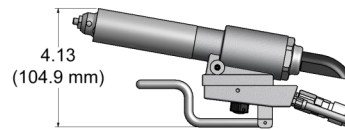
Stroke - .780" (19.8 mm)
 Hand held weight - 4.50 lbs (2 kg)
 Entire tool weight - 4.50 lbs (2kg)
 Pull load - 2,200 (9.8 kN)



GB703SH

Stroke - .780" (19.8 mm)
 Hand held weight - 2.00 lbs (.9 kg)
 Entire tool weight - 7.25 lbs (3.3 kg)
 Pull load - 2,200 (9.8 kN)
 Standard Hyd. Hose Length - 8ft (2.4m)

*5ft Hyd. Hoses are recommended with use of Backpack
 Additional custom lengths are available.*



GB703SR

Stroke - .780" (19.8 mm)
 Hand held weight - 1.50 lbs (.7 kg)
 Entire tool weight - 4.50 lbs (2 kg)
 Pull load - 2,200 9.8 kN
 Standard Hyd. Hose Length - 3ft (1.5m)

*5ft Hyd. Hoses are recommended with use of Backpack
 Additional custom lengths are available.*

**For pintail collection bottle and pintail evacuation tube options, see back.*

DESCRIPTION

The GB703 series are pneumatic-hydraulic tools designed specifically for the efficient installation of blind rivets. They can be operated in any position. They have a rated pull load of 2,200 pounds (9.8 kN) with 90 psi (6.2 bar) of air pressure at the air inlet.

The GB703SH and GB703SR riveters offer a unique "split" system providing the operator with an ergonomic tool with reduced hand held weight. The GB703SH comes with 8 feet (2.4 m) of hose and the GB703SR comes with 3 feet (.91 m) of hose. Use with our "NEW" Split-System Backpacks to increase user mobility, ergonomics and productivity. Contact GAGE BILT for more information.

The GB703 series riveters operate on 90 to 100 psi (6.2-6.9 bar) of air pressure, with 90 psi (6.2 bar) providing the maximum efficiency. At 90 psi (6.2 bar) air pressure, the GB703 series does not exceed 85 dB(A) and consumes .16 SCF/cycle (4.53 L/cycle) and consumes .30 SCF/cycle (8.50 L/cycle) for the GB703SH.

GAGE BILT
 **MADE in USA**

44766 Centre Court Clinton Twp. MI 48038 USA
 Ph: +1 (586) 226-1500 Fax: +1 (586) 226-1505
solutions@gagebilt.com / www.gagebilt.com



ACCESSORIES



NOSE ASSEMBLY CHART (For Non-Vacuum Tools Only)

(Sold Separately)

Air Bleeder Assy #704153
(Equivalent to #700A77)
(Sold Separately)

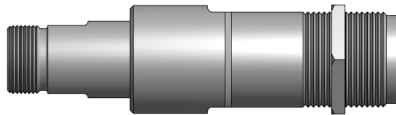
Catcher Bag-Stem #704214
(Equivalent to #670A20)
(Sold Separately)



Extensions

These extensions help reach many restricted areas by increasing the overall length of the nose assembly. They fit directly on the GB703 Installation Tool.
(Sold Separately)

L	Part Number	Equivalent to:
2"	703002	743A50
4"	703004	-
6"	703006	-



Unless ordered rivet specific (I.E. GB703/4N), the GB703 series riveters are furnished with nose assembly 6N-703-18 and spare nose tip (10202) and follower (40307) to convert to 4N-703-18 nose assembly. All other nose tips must be ordered separately. When ordering tool rivet specific, contact Gage Bilt for more information.

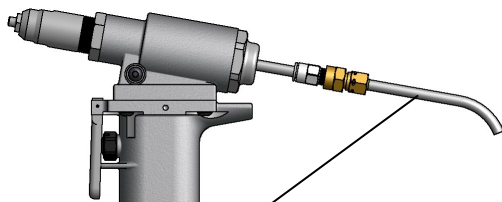
"VT" riveters are not furnished with the nose assemblies above and must be ordered for your specific rivet.

OPTIONS

The GB703 series riveters may be ordered with a vacuum system. Gage Bilt offers two varieties (see below).

Order GB703 series riveters rivet specific by adding the appropriate suffix (see selection chart).

Standard SH tools are equipped with 8ft (2.4 m) hydraulic hose assemblies & Standard SR tools are equipped with 3ft (.91 m) hydraulic hose assemblies. For all other hydraulic hose assembly length requirements contact GAGE BILT.



"VT" DESIGNATION = PINTAIL EVACUATION TUBE
(TOOL MUST BE ORDERED FOR YOUR SPECIFIC RIVET. CONTACT GAGE BILT INC. FOR SPECIFIC APPLICATIONS.)

RIVET	DIA.	NOSE ASSEMBLY	NOSE TIP 1	JAW	FOLLOWER	DESIGNATION
AVEX® (1624 PROTRUDING HEAD)	3/16	AV6-703-18 1	10141	30617	40605	AV6
AVEX (1624 COUNTERSUNK HEAD)	3/16	6C-703-18 1	10141-1	30617	40605	6C
KLAMP-TITE® (STRUCTURAL) RIVET	3/16	6KT-703-18 1	10263	30617	40605	6KT
	1/4	8KT-743-24 2	-	-	-	8KT
MACHINE SCREW RIVET	5MM	MS5M-703-18 1	10332	30617	40605	5MM
NAS1719, NAS1720, NAS1721 MBC®	1/8	MBC04-703-18 1	10251	30617	40307	MBC04
	5/32	MBC05-703-18 1	10252	30617	40605	MBC05
	3/16	MBC06-703-18 1	10253	30617	40605	MBC06
MILLIMETER SEAL PLUG	4MM	5N-703-18 1	10203	30617	40605	5N
	5MM	6N-703-18 1	10204	30617	40605	6N
MONOBOLT® RIVET	3/16	MB06-734A-20 2,5	-	-	-	MB06
	1/4 3	MB08-734A-20 2,5	-	-	-	MB08
NUTPLATE RIVET CCR244/264/274 BACR15DR MS20600	3/32	3NP-703-18 1	10231	30617	40307	3NP
	1/8	5N-703-18 1	10203	30617	40605	5N
POP® OPEN END NAIL RIVET	3/32	3N-703-18 1	10201	30617	40307	3N
	1/8	4N-703-18 1	10202	30617	40307	4N
	5/32	5N-703-18 1	10203	30617	40605	5N
	3/16	6N-703-18 1	10204	30617	40605	6N
POP® CLOSED END NAIL RIVET (ALUMINUM MANDREL)	3/32	3N-703-18 1	10201	30617	40307	3N
	1/8	4CEA-703-18 1	13471	30617	40307	4CEA
	5/32	5CEA-703-18 1	13472	30617	40605	5CEA
	3/16	6CEA-703-18 1	13473	30617	40605	6CEA
POP® CLOSED END NAIL RIVET (STEEL MANDREL)	3/32	3N-703-18 1	10201	30617	40307	3N
	1/8	4CES-703-18 1	13475	30617	40307	4CES
	5/32	5CES-703-18 1	13476	30617	40605	5CES
	3/16	6CES-703-18 1	13477	30617	40605	6CES
PLASTIC SPLIT RIVET	3/32	3P-703-18 1,6	10247-1	30617	40307	3P
	1/8	4P-703-18 1,6	10202-4	30617	40307	4P
	5/32	5P-703-18 1,6	10203-2	30617	40605	5P
	3/16	6P-703-18 1,6	10167	30617	40605	6P
	1/4	8P-743-24 2,6	-	-	-	8P
SCREW RIVET	3/16	6SR-703-18 1	13506	30617	40605	6SR
T RIVET®	3/16	6T-703-18 1	10209	30617	40605	6T
	1/4 3	8T-743-24 2	-	-	-	8T
TLR® RIVET	1/4	8TLR-743-24 2	-	-	-	8TLR
COUNTERSUNK HEAD MAGNA-LOK® & SERRATED STEM STRUCTURAL RIVETS	3/16	C6-734A-20 2,5	-	-	-	C6
	1/4 4	C8-734A-20 2,5	-	-	-	C8
PROTRUDING HEAD MAGNA-LOK® & SERRATED STEM STRUCTURAL RIVETS	3/16	PH6-734A-20 2,5	-	-	-	PH6
	1/4 4	PH8-734A-20 2,3,5	-	-	-	PH8

AVEX®, KLAMP-TITE®, TLR®, AND MONOBOLT® ARE REGISTERED TRADEMARKS OF AVDEL UK LIMITED. T RIVET® AND MBC® ARE REGISTERED TRADEMARKS OF CHERRY AEROSPACE FASTENERS. POP® IS A REGISTERED TRADEMARK OF EM HART TECHNOLOGIES. MAGNA-LOK® IS A REGISTERED TRADEMARK OF ARCONIC INC.

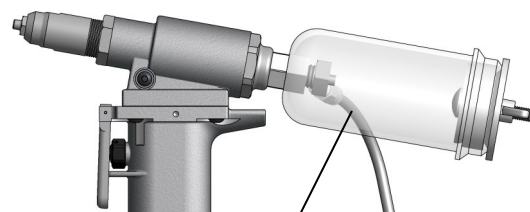
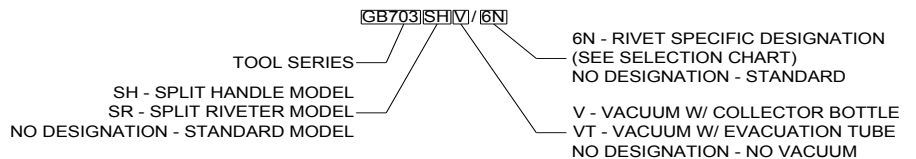
1) YOU CAN CHANGE THE 703-18 NOSE ASSEMBLY (INCLUDED WITH TOOL) TO INSTALL OTHER FASTENERS BY PURCHASING NOSE TIP SHOWN AND USING APPROPRIATE FOLLOWER SHOWN.

- 2) NOSE ASSEMBLIES WITH A 743-24 AND 734A-20 DESIGNATION, I.E. 8N-743-24, MUST BE ORDERED AS COMPLETE NOSE ASSEMBLY.
- 3) ALUMINUM RIVET STEEL MANDREL ONLY (100 PSI REQUIRED FOR ALL 1/4" STEEL RIVETS).
- 4) 1/4" ALUMINUM ONLY.
- 5) NOSE ASSEMBLIES WITH A 734A DESIGNATION, I.E. PH6-734A-20, ARE FOR SERRATED STEM RIVETS ONLY. IF YOU ARE PULLING BOTH SMOOTH AND SERRATED STEM RIVETS YOU MUST ORDER THE NOSE ASSEMBLY WITH A 743 DESIGNATION, I.E. MGL06-743-24.
- 6) MAY REQUIRE MORE THAN (1) PULL. GAGE BILT RECOMMENDS GB734 TOOL.

NOTE: THE LAST 2 DIGITS OF THE NOSE ASSEMBLY REPRESENTS THE LENGTH THE NOSE EXTENDS FROM THE TOOL. I.E. -20 = 2.0 INCHES

REV. 12/17

HOW TO ORDER GB703 SERIES TOOLS



"V" DESIGNATION = PINTAIL COLLECTION BOTTLE

Rev. 12/17