

# GB722

## PNEUDRAULIC INSTALLATION TOOL

# GAGE BILT

RIVET & LOCKBOLT TOOLS

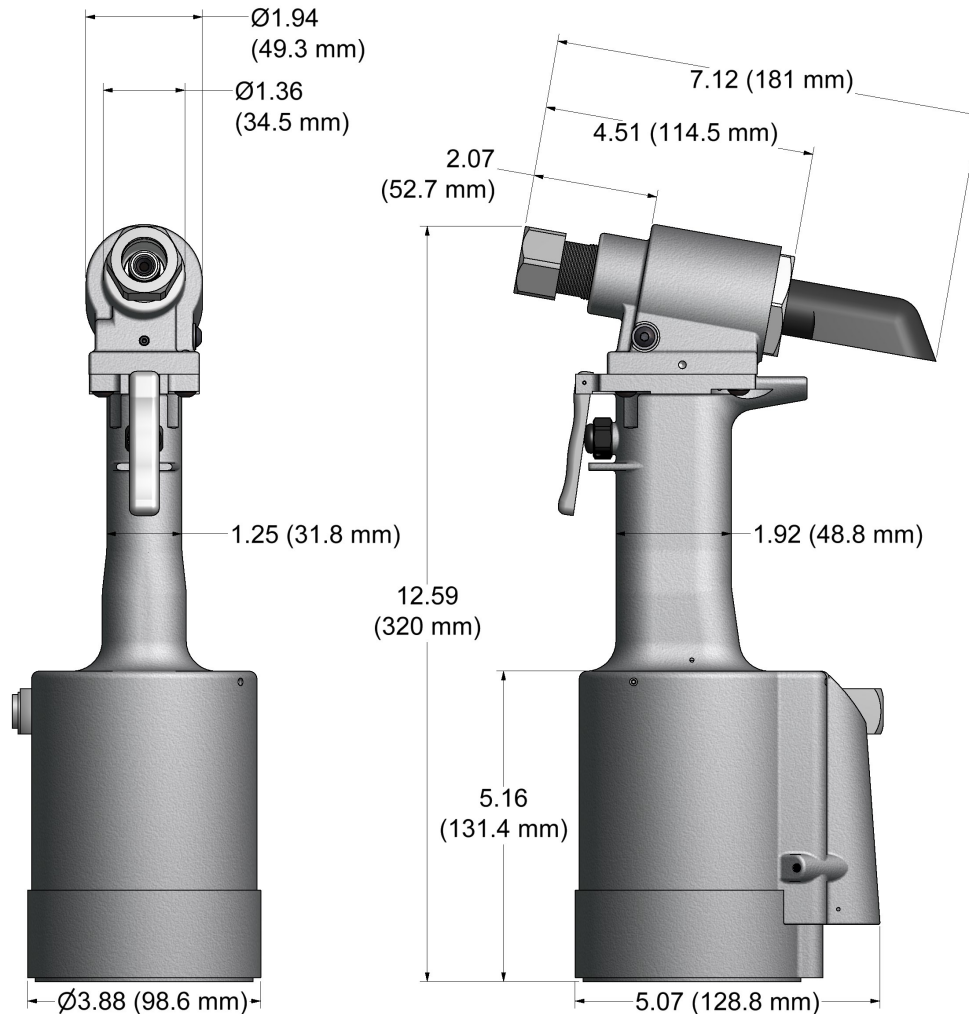
44766 Centre Ct. Clinton Twp. MI 48038 USA

+1 586. 226.1500

+1 586. 226.1505

[solutions@gagebilt.com](mailto:solutions@gagebilt.com)

[www.gagebilt.com](http://www.gagebilt.com)



### GB722

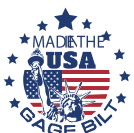
Stroke - .590" (15.00 mm)  
Weight - 5.50 lbs. (2.49 kg)  
Pull load - 4,700 (20.91 kN)

The GB722 is a pneumatic-hydraulic tool designed specifically for the efficient installation of blind rivets and lockbolt fasteners. It weighs 5.50 lbs. (2.49 kg) and can be operated in any position. It has a .590" (15.0mm) rivet setting stroke and a rated pull load of 4,700 lbs (20.9 kN) with 90 psi (6.2 bar) air pressure at the air inlet.

The GB722 installation tool operates on 90 to 100 psi (6.2-6.9 bar) of air pressure, with 90 psi. (6.2 bar) providing the maximum efficiency. At 90 psi (6.2 bar) of air pressure, the GB722 does not exceed 81.5 dB(A) and consumes .16 SCF/cycle (4.53 L/cycle).

The air inlet is provided with 1/4-18 female pipe thread to accept the users air hose fitting.

**NOSE ASSEMBLIES ARE NOT FURNISHED WITH TOOL AND MUST BE ORDERED SEPARATELY.**





# GB722-NOSE ASSEMBLY SELECTION CHART & ACCESSORIES



## ACCESSORIES

**AIR BLEEDER ASSY**  
#704153  
(Sold Separately)

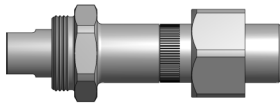


**STEM CATCHER BAG**  
#756610  
(Sold Separately)



**ADAPTER ASSY**  
#751204

Adapts 204 offset series nose assemblies to GB722 installation tool.  
(Sold Separately)



Other adapters available. Contact Gage Bilt for more information.

**STROKE LIMITER**  
#722142

Required with all right angle nose assy's when used on GB722 tool.  
(Sold Separately)



**GRIP GAGE #GB105093**  
For NAS LOCKBOLTS and blind fasteners  
(Sold Separately)



**GRIP GAGE #269G3**

For CHERRYMAX® and CHERRYLOCK® rivets  
(Sold Separately)



**GB722CKL TRAILER AND CAB KIT**



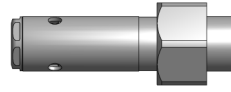
GAGE BILT OFFERS A WIDE SELECTION OF STANDARD AND CUSTOM KITS TAILORED TO YOUR NEEDS.  
(Sold Separately)

## NOSE ASSEMBLIES

**STRAIGHT**  
(Sold Separately)

**RIGHT ANGLE**  
(Sold Separately)

**OFFSET**  
(Sold Separately)



FASTENER	DIA.	STRAIGHT	*RIGHT ANGLE	**OFFSET
C6L® LOCKBOLTS	3/16 1/4	LB06-722-20 LB08-722-20	LB06-722-60 LB08-722-60	
MAGNA-GRIP® LOCKBOLTS MULTI-GRIP	3/16 1/4	MG06-722-20 MG08-722-20	MG06-722-60 MG08-722-60	
PROTRUDING HEAD, MAGNA-LOK® BLIND RIVETS	3/16 1/4	MGL06-752A-21 <sub>g</sub> MGL08-752A-21 <sub>g</sub>	MGL06-752A-61 <sub>g</sub> MGL08-752A-61 <sub>g</sub>	MGL06-713B-58RA <sub>g</sub> MGL08-713B-58RA <sub>g</sub>
COUNTERSUNK HEAD, MAGNA-LOK® BLIND RIVETS	3/16 1/4	MGLC06-752A-21 <sub>g</sub> MGLC08-752A-21 <sub>g</sub>	MGLC06-752A-61 <sub>g</sub> MGLC08-752A-61 <sub>g</sub>	
BLIND BOLT (SINGLE ACTION) WITH OR W/O DRIVE WASHER	1/8 5/32	SB04-752C-20 SB05-752C-20 SB05-752C-80	SB04-752C-45 SB05-752C-45	SB04-751C-54RA SB05-751C-54RA
MS90353S & U / MS90354S & U MS21140S & U / MS21141S & U MAXIBOLT®, BACB30YY, YU, & YT	3/16 1/4 <sub>g</sub>	SB06-752B-20 SB06-752B-80 SB08-713-20 <sub>g</sub>	SB06-752B-45 SB08-713-45 <sub>g</sub>	SB06-751B-54RA <sub>g</sub>
SB06-204D-27OS				SB08-204D-27OS <sub>g</sub> SB08-204D-37OS <sub>g</sub>
BLIND BOLT (SINGLE ACTION) WITH DRIVE WASHER	1/8 5/32	UBB04-752C-20 UBB05-752C-20 UBB05-752C-80	UBB04-752C-45 UBB05-752C-45	UBB04-751C-54RA UBB05-751C-54RA
MS90353S & U / MS90354S & U MS21140S & U / MS21141S & U MAXIBOLT®, BACB30YY, YU, & YT	3/16 1/4 <sub>g</sub>	UBB06-752B-20 UBB06-752B-80 UBB08-713-20 <sub>g</sub>	UBB06-752B-45 UBB08-713-45	UBB06-751B-54RA
UBB06-204D-27OS				UBB08-204D-27OS <sub>g</sub> UBB08-204D-37OS <sub>g</sub>
EN6122 & UAB130-EU EN6127 & UAB6127-EU EN6128 & UAB100-EU EN6129 & UABP-EU MAXIBOLT® PLUS	5/32 3/16 1/4	UAB568-713-21 <sub>g</sub> UAB568-713-61 <sub>g</sub>		UAB05-751C-54RA UAB06-751B-54RA <sub>g</sub>
UAB05-752B-43OS UAB06-752B-43OS UAB08-204D-27OS				UAB08-204D-37OS
UNIMATIC® BLIND RIVET (SINGLE ACTION) WITH OR W/O DRIVE WASHER	1/8 5/32 3/16 1/4	SMLS04-752C-20 SMLS05-752C-20 SMLS06-752B-20 SMLS08-713-20	SMLS04-752C-45 SMLS05-752C-45 SMLS06-752B-45 SMLS08-713-45	SMLS04-751C-54RA SMLS05-751C-54RA SMLS06-751C-54RA SMLS08-751B-54RA
SMLS04-752B-43OS SMLS05-752B-43OS SMLS06-752B-43OS SMLS08-204D-27OS				SMLS08-204D-37OS
UNIMATIC® BLIND RIVET (SINGLE ACTION) WITH DRIVE WASHER	1/8 5/32 3/16 1/4	456UBR-751A-21 <sub>1</sub> UBR08-713-20	456UBR-751A-61 <sub>1</sub> UBR08-713-45	456UBR-751D-54RA <sub>1</sub> UBR08-751B-54RA
456MAX-731-43OS <sub>1</sub>				UBR08-204D-27OS UBR08-204D-37OS
"A" CODE NAS1398A & NAS1399A	3/32 1/8 5/32 3/16 1/4	3A-352B-25 4A-752C-20 5A-752C-20 6A-752B-20 SMLS08-713-20	4A-752C-45 5A-752C-45 6A-752B-45 SMLS08-713-45	3A-751C-54RA 4A-751C-54RA 5A-751C-54RA 6A-751C-54RA SMLS08-751B-54RA
SMLS08-204D-27OS				SMLS08-204D-37OS
MONOBOLT®	3/16 1/4	MB06-752A-21 <sub>g</sub> MB08-752A-21 <sub>g</sub>	MB06-752A-61 <sub>g</sub> MB08-752A-61 <sub>g</sub>	MB06-751C-54RA <sub>g</sub> MB08-713-58RA <sub>g</sub>
CONTAINER BOLT(R 12) HLPP, HLPV, HLPPE, HLPSS HLPS & HLPSP	3/8	HT12-713-20		
CHERRYMAX®, CHERRYMAX® 'AB', BACR15FR/FP, BACR15GF/GK	1/8 5/32 3/16 1/4	456MAX-751-23 <sub>1</sub> 08MAX-752B-20	456MAX-751A-61 <sub>1</sub> 08MAX-752B-45	456MAX-751D-54RA <sub>1</sub> 08MAX-713A-58RA
08MAX-204D-27OS				08MAX-204D-37OS
NAS1900 S & U SERIES BLIND RIVET WITH DRIVE WASHER	1/4	08MAX-752B-20	08MAX-752B-45	08MAX-713A-58RA
08MAX-204D-27OS				08MAX-204D-37OS
ASP®	13/64 17/64 21/64	ASP06-752C-20 ASP08-752B-20 ASP10-713-20	ASP06-752C-45 ASP08-752B-45 ASP10-713-45	ASP06-751B-54RA ASP08-751B-54RA
ASP06-752B-43OS ASP08-752B-43OS ASP10-204D-27OS				ASP10-204D-37OS
STANDARD MBC®	1/8 5/32 3/16	MBC04-752C-20 MBC05-752C-20 MBC06-752B-20	MBC04-752C-45 MBC05-752C-45 MBC06-752B-45	MBC04-751C-54RA MBC05-751C-54RA MBC06-751C-54RA
MBC04-752C-43OS MBC05-752C-43OS MBC06-752C-43OS				
MBC® LOCK CREATOR	1/8 5/32 3/16	456MAX-751-23 <sub>1</sub> 456MAX-751A-61 <sub>1</sub>	456MAX-751A-61 <sub>1</sub>	456MAX-751D-54RA <sub>1</sub>
456MAX-731-43OS <sub>1</sub>				
GROUND STUD,	8/32 10/32	GS8-752C-20 GS10-752B-20	GS8-752C-45 GS10-752B-45	GS8-751C-54RA GS10-752A-54RA
GS8-752B-43OS GS10-752B-43OS				

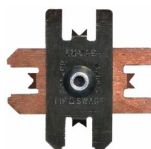
MONOBOLT® IS A REGISTERED TRADEMARK OF AVDEL UK LIMITED. ASP®, C6L®, UNIMATIC®, MAGNA-LOK® AND MAGNA-GRIP® ARE REGISTERED TRADEMARKS OF ARCONIC INC. CHERRYMAX®, MAXIBOLT® AND MBC® ARE REGISTERED TRADEMARKS OF CHERRY AEROSPACE FASTENERS.

**GAGE BILT CERTIFIES THE GB722 WILL INSTALL THE ABOVE FASTENERS**

*ALL -54RA RIGHT ANGLE NOSE ASSEMBLIES REQUIRE 722142 STROKE LIMITER.
**ALL OFFSET 204 SERIES NOSES REQUIRE 751204 ADAPTER.
1) INSTALLS 1/8 5/32 & 3/16 DIAMETERS
2) RIGHT ANGLE NOSE ASSEMBLIES MAY REQUIRE MORE THAN ONE PULL.
3) INSTALLS 5/32, 3/16 & 1/4 DIAMETERS.
4) 105 PSI REQUIRED FOR MS90353 & 54
5) THESE NOSES FOR LIGHT DUTY / REPAIR ONLY. CONSULT GAGE BILT FOR HIGH PRODUCTION APPLICATIONS.
6) 2 PULLS REQUIRED FOR MOST APPLICATIONS.
7) BACS53B -10 ONLY

NOTE: THE LAST 2 DIGITS OF THE NOSE ASSEMBLY REPRESENTS THE LENGTH THE NOSE EXTENDS FROM THE TOOL. I.E. -20 = 2.0 INCHES

REV. 8/19



Gage Bilt also supplies pin & collar swage inspection gages to certify swage installation.  
(Sold Separately)

