

# GB731

## PNEUDRAULIC INSTALLATION TOOL

# GAGE BILT

RIVET & LOCKBOLT TOOLS

44766 Centre Ct. Clinton Twp. MI 48038 USA

+1 586. 226.1500

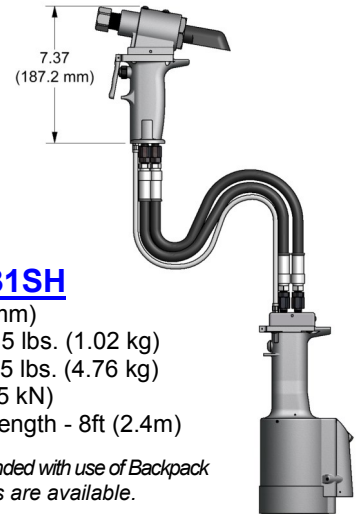
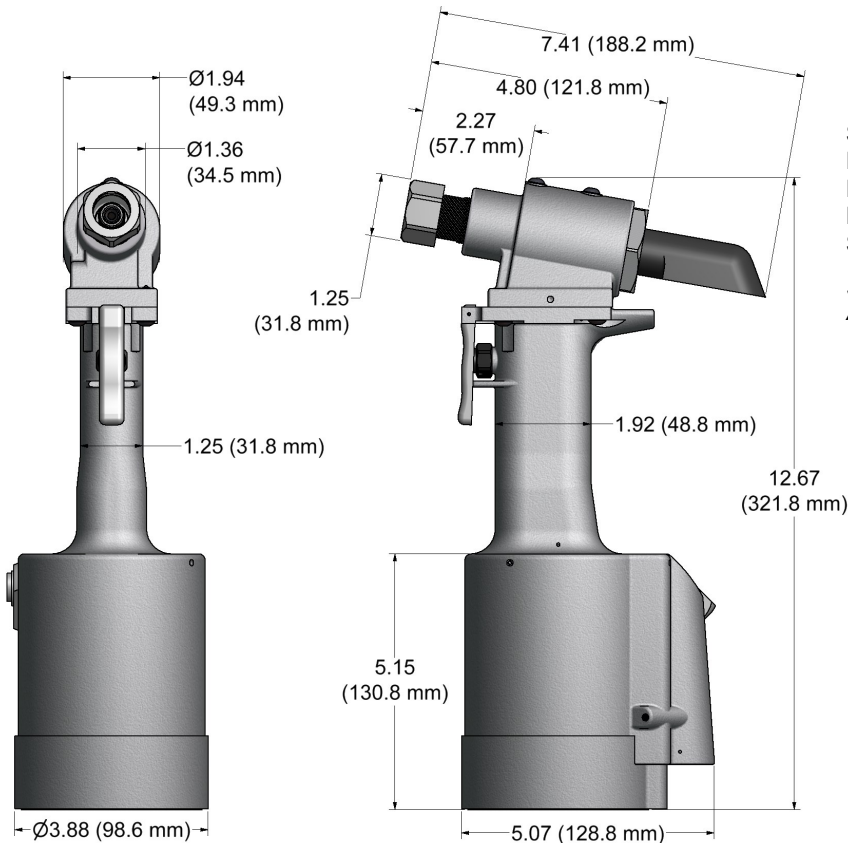
+1 586. 226.1505

[solutions@gagebilt.com](mailto:solutions@gagebilt.com)

[www.gagebilt.com](http://www.gagebilt.com)

### GB731

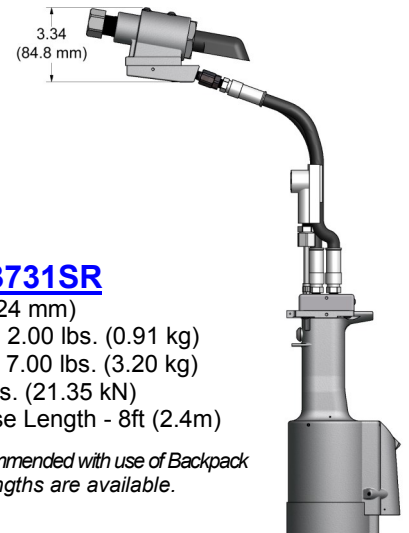
Stroke - .600" (15.24 mm)  
Hand held weight - 5.75 lbs. (2.61 kg)  
Entire tool weight - 5.75 lbs. (2.61 kg)  
Pull load - 4,800 lbs. (21.35 kN)



### GB731SH

Stroke - .600" (15.24 mm)  
Hand held weight - 2.25 lbs. (1.02 kg)  
Entire tool weight - 10.5 lbs. (4.76 kg)  
Pull load - 4,800 (21.35 kN)  
Standard Hyd. Hose Length - 8ft (2.4m)

*5ft Hyd. Hoses are recommended with use of Backpack  
Additional custom lengths are available.*



### GB731SR

Stroke - .600" (15.24 mm)  
Hand held weight - 2.00 lbs. (0.91 kg)  
Entire tool weight - 7.00 lbs. (3.20 kg)  
Pull load - 4,800 lbs. (21.35 kN)  
Standard Hyd. Hose Length - 8ft (2.4m)

*5ft Hyd. Hoses are recommended with use of Backpack  
Additional custom lengths are available.*

The GB731 is a pneumatic-hydraulic installation tool designed specifically for the efficient installation of blind rivets and lockbolts. It weighs just under 5.75 lbs. (2.61 kg) and can be operated in any position. It has a .600 (15.24 mm) fastener setting stroke and a rated pull load of 4,800 lbs. (21.35 kN) on 90 psi (6.2 bar) air pressure at the air inlet.

The GB731 installation tool operates on 90 to 100 psi (6.2-6.9 bar) of air pressure, with 90 psi (6.2 bar) providing the maximum efficiency. At 90 psi. (6.2 bar) of air pressure, the GB731 does not exceed 81.5 dB(A) and consumes .16 SCF/cycle (4.53 L/cycle).

The GB731SH and GB731SR installation tools offer a unique "split" system providing the operator with an ergonomic tool with reduced hand held weight, as shown above. The GB731SH comes with 8 feet (2.4 m) of hose and the GB731SR comes with 3 feet (.91 m) of hose.

The air inlet is provided with 1/4-18 female pipe thread for accepting the user's air hose fitting.

**NOSE ASSEMBLIES ARE NOT FURNISHED WITH THIS RIVETER AND MUST BE ORDERED SEPARATELY.**





# ACCESSORIES



## Catcher Bag-Stem #731610 (Sold Separately)



## Grip Gage #269G3

For CHERRYMAX® and CHERRYLOCK® rivets (Sold Separately)



## Grip Gage #GB105093

For NAS LOCKBOLTS and blind fasteners (Sold Separately)



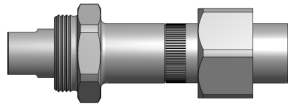
## Stroke Limiter #731154

Required with selected right angle nose assy's when used on GB731 tool. See chart. (Sold Separately)



## Adapter Assy #751204

Adapts GB204 series nose assemblies to GB731 installation tool. (Sold Separately)



**Gage Bilt also supplies**



**pin & collar swage inspection gages to certify swage installation.**  
(Sold Separately)



## Riveter Kits Available

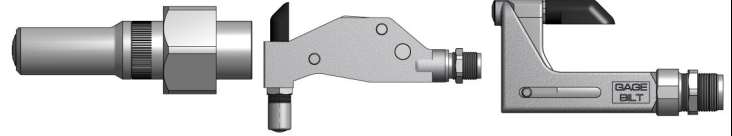
Contact Gage Bilt for more information. (Sold Separately)

## GB731-NOSE ASSEMBLY SELECTION CHART

**STRAIGHT**  
(Sold Separately)

**RIGHT ANGLE**  
(Sold Separately)

**OFFSET**  
(Sold Separately)



| FASTENER   | DIA.                               | STRAIGHT   | *RIGHT ANGLE  | **OFFSET  |   |
|--|------------------------------------|--|---|---|---|
| 'A' CODE<br>NAS1398 & NAS1399 'A'  | 3/32<br>1/8<br>5/32<br>3/16<br>1/4 | 3A-352B-25<br>4A-752C-20<br>5A-752C-20<br>6A-752B-20<br>SMLS08-713-20  | 4A-752C-45<br>5A-752C-45<br>6A-752B-45<br>SMLS08-713-45                         | 3A-751C-54RA 5<br>4A-751C-54RA 5<br>5A-751C-54RA 5<br>6A-751C-54RA 5  | 4A-752B-430S<br>5A-752B-430S<br>6A-752B-430S<br>SMLS08-752B-430S  |
| ASP®<br>2 ASP & ASP PF<br>ASP FF & ASP F<br>ASPLC & MAF  | 13/64<br>17/64                     | ASP06-752C-20<br>ASP08-752B-20   | ASP06-752C-45<br>ASP08-752B-45  | ASP06-751B-54RA 5<br>ASP08-751B-54RA 5  | ASP06-752B-430S<br>ASP08-752B-430S  |
| LGP® LOCKBOLT<br>LGPL2SC-V BACB30VM<br>LGPL18SC-V BACB30XT<br>LGPL4SC-V ABS0548<br>LGPL2SP-V BACB30VN<br>LGPL4SP-V ASNA2392<br>LGPL8SC-V BACB30WD<br>LGPL9SC-V BACB30WB<br>LGPL9SP-V BACB30VY<br>BACB31N BACB31P                                       | 5/32<br>3/16<br>7/32<br>1/4        | LGP05-2480-10<br>LGP05-2480-45<br>LGP06-2480-10<br>LGP06-2480-45CF7<br>LGP06-2480-45<br>LGP07-731-10<br>LGP07-731-45<br>LGP08-2480-10<br>LGP08-2480-45<br>LGP08-2480-45CF8 | LGP05-2480-20<br>LGP06-2480-20<br>LGP07-731-20<br>LGP08-2480-20                 | LGP06-204C-34OS<br>LGP07-204C-25OS<br>LGP07-204C-30OS<br>LGP08-204C-25OS<br>LGP08-204C-30OS                                       | LGP05-204C-25OS<br>LGP05-204C-30OS<br>LGP06-204C-25OS<br>LGP06-204D-30OS<br>LGP07-204C-34OS<br>LGP07-204C-30OS<br>LGP08-204C-25OS<br>LGP08-204D-30OS<br>LGP08-204C-34OS |
| MLGP®<br>(MILLIMETER)<br>LOCKBOLT  | 4 MM<br>5MM<br>6MM                 | MLGP4-730B-10<br>MLGP4-2480-45<br>MLGP5-730B-10<br>MLGP5-2480-45<br>MLGP6-730B-10<br>MLGP6-2480-45   | MLGP4-2480-20<br>MLGP5-2480-20<br>MLGP6-2480-20                                 | MLGP4-204C-25OS<br>MLGP4-204C-34OS<br>MLGP5-204C-25OS<br>MLGP5-204C-34OS<br>MLGP6-204C-25OS<br>MLGP6-204C-34OS                    | MLGP4-204C-30OS<br>MLGP5-204D-30OS<br>MLGP6-204D-30OS   |
| NAS and GP® SHEAR/TENSION<br>LOCKBOLTS<br>BACB30TY BACB30UA<br>BACB30TZ BACB30UB<br>BACB30DY BACB30GX<br>BACB30DX BACB30GP<br>BACB30GO BACB30GY<br>BACB30GW  | 5/32<br>3/16<br>1/4 3              | NASS05-2480-10<br>NASS05-2480-20<br>NASS05-2480-45<br>NAS06-730B-10<br>NAS06-2480-45<br>NAS08-352-10<br>NAS08-2480-45  | NAST05-2480-10<br>NAST05-2480-20<br>NAST05-2480-45<br>NAS06-2480-20             | NASS05-204C-25O<br>NASS05-204C-30O<br>NASS05-204C-34O<br>NAS06-204C-25OS<br>NAS06-204C-34OS<br>NAS08-204C-25OS<br>NAS08-204C-34OS | NAST05-204C-25O<br>NAST05-204C-30O<br>NAST05-204C-34O<br>NAS06-204D-30OS  |
| MGP®<br>(MILLIMETER)<br>LOCKBOLT   | 4 MM<br>5 MM<br>6 MM               | MGP4-730B-10<br>MGP4-2480-45<br>MGP5-730B-10<br>MGP5-2480-45<br>MGP6-730B-10<br>MGP6-2480-45   | MGP4-2480-20<br>MGP5-2480-20<br>MGP6-2480-20                                    | MGP4-204C-25OS<br>MGP4-204C-34OS<br>MGP5-204C-25OS<br>MGP5-204C-34OS<br>MGP6-204C-25OS<br>MGP6-204C-34OS                          | MGP4-204C-30OS<br>MGP5-204D-30OS<br>MGP6-204D-30OS  |
| CHERRYMAX®<br>CHERRYMAX® 'AB'<br>BACR15FR/FP BACR15GF/GK<br>NAS1900 S & U SERIES BLIND<br>RIVET WITH DRIVE WASHER  | 1/8<br>5/32<br>3/16<br>1/4         | 456MAX-751-23 2<br>08MAX-752B-20   | 456MAX-751A-61 2<br>08MAX-752B-45   | 456MAX-751D-54RA 2 5<br>08MAX-713A-58RA 5   | 456MAX-731-430S 2<br>08MAX-204D-27OS<br>08MAX-204D-37OS   |
| BLIND BOLT (SINGLE ACTION)<br>WITH OR W/OUT DRIVE<br>WASHER<br>MS90353S & U / MS90354S & U<br>MS21140S & U / MS21141S & U<br>MAXI-BOLT®,<br>BACB30YY, YU, & YT<br>EN6122 & UAB6130-EU<br>EN6127 & UAB6127-EU<br>EN6128 & UAB100-EU<br>EN6129 & UABP-EU | 1/8<br>5/32<br>3/16<br>1/4         | SMLS04-752C-20<br>SB05-752C-20<br>SB05-752C-80<br>SB06-752B-20<br>SB06-752B-80<br>SB08-713-20 6  | SMLS04-752C-45<br>SB05-752C-45<br>SB05-752C-45<br>SB06-752B-45<br>SB08-713-45 6 | SB05-751C-54RA 5<br>SB06-751B-54RA 5<br>SB08-713A-58RA 5  | SB05-752A-43OS<br>SB06-204D-27OS 6<br>SB06-204D-37OS 6<br>SB08-204D-27OS 6<br>SB08-204D-37OS 6  |
| BLIND RIVET (SINGLE ACTION)<br>WITH OR W/OUT DRIVE<br>WASHER<br>NAS1900 S & U SERIES   | 1/8<br>5/32<br>3/16<br>1/4         | SMLS04-752C-20<br>SMLS05-752C-20<br>SMLS06-752B-20<br>SMLS08-713-20  | SMLS04-752C-45<br>SMLS05-752C-45<br>SMLS06-752B-45<br>SMLS08-713-45             | SMLS04-751C-54RA 5<br>SMLS05-751C-54RA 5<br>SMLS06-751C-54RA 5<br>SMLS08-713B-58RA  | SMLS04-752B-430S<br>SMLS05-752B-430S<br>SMLS06-204D-27OS<br>SMLS08-204D-37OS  |

ASP®, LGP®, MLGP®, MGP®, AND GP® ARE REGISTERED TRADEMARKS OF ARCONIC INC. CHERRYMAX®, MAXI-BOLT®, AND MBO® ARE REGISTERED TRADEMARKS OF CHERRY AEROSPACE FASTENERS.

### GAGE BILT CERTIFIES THE GB731 WILL INSTALL THE ABOVE FASTENERS

- \*\*ALL OFFSET 204 SERIES NOSES REQUIRE 751204 ADAPTER.
- 1) RIGHT ANGLE NOSE ASSEMBLIES MAY REQUIRE MORE THAN ONE FULL.
  - 2) INSTALLS 1/8, 5/32 & 3/16 DIAMETERS.
  - 3) NOT FOR SHEAR AND TENSION IN ALLOY OR TITANIUM
  - 4) INSTALLS 5/32, 3/16 & 1/4 DIAMETERS.
  - 5) RIGHT ANGLE NOSE REQUIRES 731154 STROKE LIMITER.
  - 6) 105 P.S.I. REQUIRED FOR MS90353 & MS90354
  - 7) USED WITH THE GB5660S3SLCC (3SLC-C COLLAR) FEED AND SWAGE ACCESSORY. FOR ALL OTHER COLLARS CONTACT GAGE BILT FOR MORE INFORMATION.
  - 8) USED WITH THE GB5680S3SLCC (3SLC-C COLLAR) FEED AND SWAGE ACCESSORY. FOR ALL OTHER COLLARS CONTACT GAGE BILT FOR MORE INFORMATION.

NOTE: THE LAST 2 DIGITS OF THE NOSE ASSEMBLY REPRESENTS THE LENGTH THE NOSE EXTENDS FROM THE TOOL. I.E. -20 = 2.0 INCHES

**Feed N Swage**  
3/16" #GB5660S3SLCC  
1/4" #GB5680S3SLCC  
For LGP® 3SLC-C Collars  
Contact Gage Bilt for more information.  
(Sold Separately)



PATENT PENDING