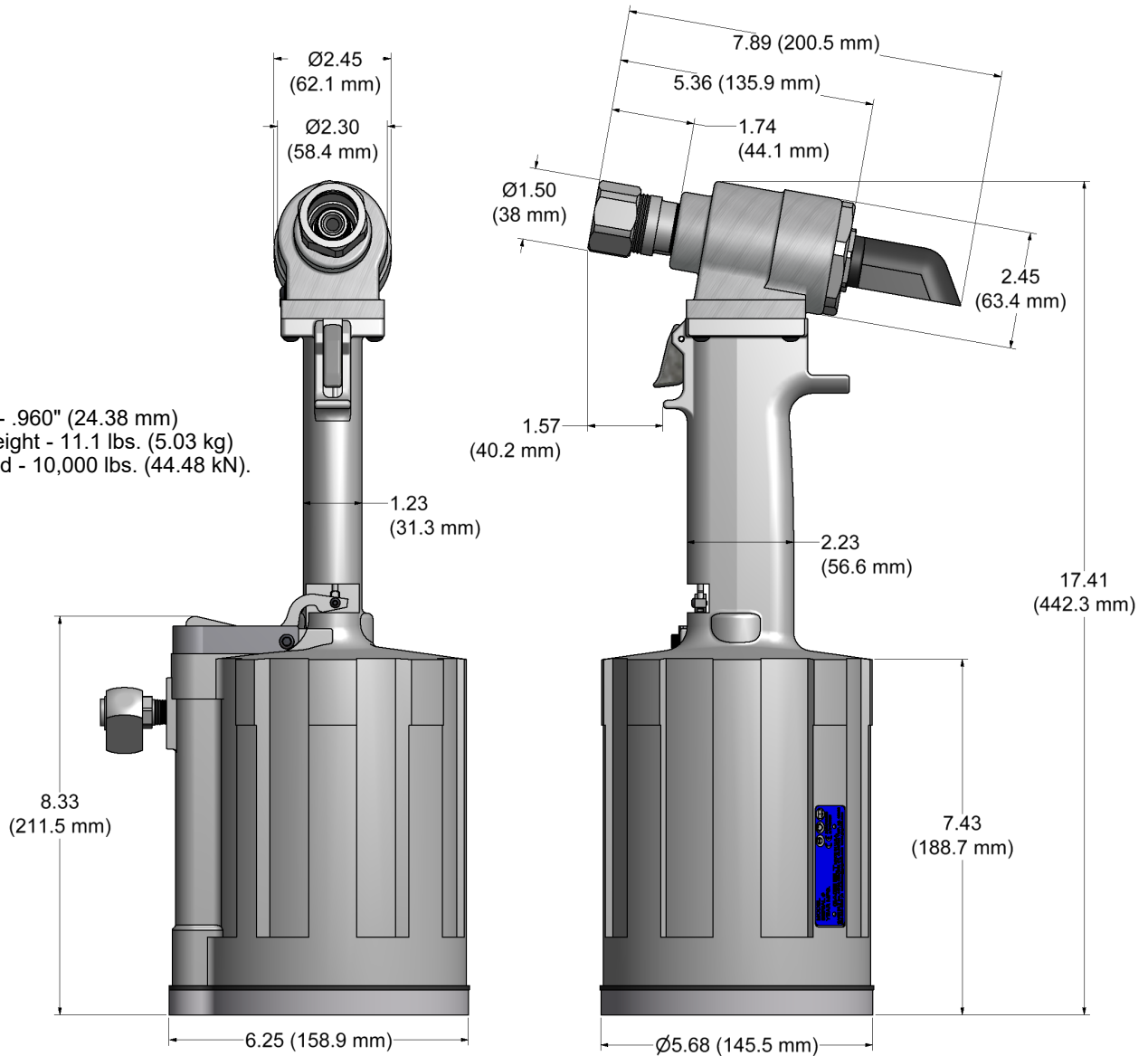


# GB756

## INSTALLATION TOOL

### **GB756**

Stroke - .960" (24.38 mm)  
 Tool weight - 11.1 lbs. (5.03 kg)  
 Pull load - 10,000 lbs. (44.48 kN).



### **DESCRIPTION**

The GB756 is a hydraulic installation tool designed specifically for the efficient installation of blind fasteners, lockbolts and Magna-Grip® fasteners thru 3/8" diameter. It weighs 11.1 lbs. (5.03 kg) and can be operated in any position. It has a .960" (24.38 mm) fastener setting stroke and a rated pull load of 10,000 lbs. (44.48 kN).

The GB756 installation tool operates on 90 to 100 psi (6.2-6.9 bar) of air pressure, providing the maximum efficiency. At 90 psi. (6.2 bar) of air pressure, the GB756 does not exceed 81.5 dB (A) and consumes 6.0 cfm at 20 cycles per minute.

The air inlet is provided with 1/4-18 female pipe thread for accepting the user's air hose fitting.

**NOSE ASSEMBLIES ARE NOT FURNISHED WITH THIS RIVETER AND MUST BE ORDERED SEPARATELY.**



# GB756-NOSE ASSEMBLY SELECTION CHART & ACCESSORIES



## ACCESSORIES (SOLD SEPARATELY)

## NOSE ASSEMBLIES (SOLD SEPARATELY)

**Air Bleeder Assy #704153**  
(Sold Separately)

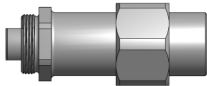


**Catcher Bag-Stem #756610**  
(Sold Separately)



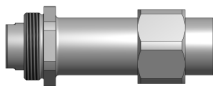
### Adapter Assy #353204

Adapts 204 series noses to GB756 tool  
Use 756152 Stroke Limiter with 204 series noses  
(Sold Separately)



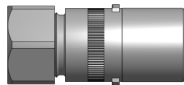
### Adapter Assy #745205

Adapts 205 series noses to GB756 tool  
Use 756153 Stroke Limiter with 205 series noses  
(Sold Separately)



### Adapter Assy #745751

Adapts -54 & -58 RA series noses to GB756 tool  
Use 756155 stroke limiter with -54RA noses  
Use 756152 stroke limiter with -58RA noses  
(Sold Separately)



### Stroke Limiter #756152

Required with all offset 204 & -58RA series nose assy's when used on GB756 tool.  
Use 353204 adapter with 204 noses  
Use 745751 adapter with -58RA noses  
(Sold Separately)



### Stroke Limiter #756153

Required with all offset 205 series nose assy's when used on GB756 tool.  
Use 745205 adapter with 205 noses  
(Sold Separately)

### Stroke Limiter #756155

Required with all -54RA series nose assy's when used on GB756 tool.  
Use 745751 adapter with -54RA noses



### RIVETER KITS

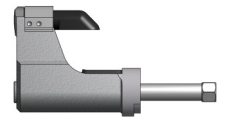
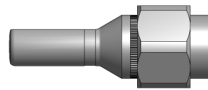
Gage Bilt offers a wide selection of standard and custom kits tailored to your needs.  
Contact us for more information.



## STRAIGHT

## RIGHT ANGLE

## OFFSET



FASTENER	DIA.	STRAIGHT	**RIGHT ANGLE	*OFFSET	
ASP® 2 ASP & ASP PF ASP FF & ASP F ASP-LC and MAF	13/64 17/64 21/64	ASP06-745C-23 ASP08-745B-23 ASP10-755-23	ASP06-745C-48 ASP08-745B-48 ASP10-755-48	***ASP06-751B-54RA ASP06-204D-27OS ASP08-204D-27OS ASP10-204D-27OS	ASP06-204D-37OS ASP08-204D-37OS ASP10-204D-37OS
BOMB® AVBOLT®	1/4 5/16	BOMB®-755A-23 BOM10-756-26			
COMMERCIAL LOCKBOLTS C6L® AVDELOK®	3/16 1/4 5/16 3/8	NAS06-2581-12 NAS06-2581-23 NAS08-2581-12 NAS08-2581-23 LB10-745C-23 LB12-756-26	NAS06-2581-48 NAS08-2581-48	NAS06-204C-25OS NAS08-204C-25OS NAS08-205A-31 NAS10-204C-31 NAS12-205A-31	NAS06-204D-30OS NAS08-204D-30OS NAS08-204C-34OS
CONTAINER BOLT FLOOR BOLT	3/8 5/16	HT12-756-23 FT10-353A-28			
LGP® LOCKBOLT	5/32	LGP05-2581-12 LGP05-2581-48 LGP06-2581-12 LGP06-2581-48	LGP05-2581-23 LGP06-2581-23	LGP05-204C-25OS LGP05-204C-34OS LGP06-204C-25OS LGP06-204C-34OS	LGP05-204C-30OS LGP06-204D-30OS
LGFL2SC-V BACB30VM LGFL18SC-V BACB30XT LGFL4SC-V ABS0548 LGFL2SP-V BACB30VN LGFL4SP-V ASNA2392 LGFL8SC-V BACB30WD LGFL9SC-V BACB30WB LGFL9SP-V BACB30VY BACB31N BACB31P	3/16 7/32 1/4 5/16 3/8	LGP06-2581-12 LGP07-755-48 LGP07-755-23 LGP08-2581-12 LGP08-2581-48 LGP10-2581-12 LGP10-2581-48 LGP12-745B-12 LGP12-756-48	LGP07-755-23 LGP08-2581-23 LGP10-2581-23	LGP07-204C-25OS LGP07-204C-34OS LGP08-204C-25OS LGP08-204C-34OS LGP10-205D-31	LGP07-204C-30OS LGP08-204D-30OS LGP08-205A-31
MLGP® (MILLIMETER) LOCKBOLT	4mm 5mm 6mm 8mm 10mm	MLGP4-2581-12 MLGP4-2581-23 MLGP5-2581-12 MLGP5-2581-23 MLGP6-2581-12 MLGP6-2581-23 MLGP8-2581-12 MLGP8-2581-23 MLGP10-2581-23	MLGP4-2581-48 MLGP5-2581-48 MLGP6-2581-48	MLGP4-204C-25OS MLGP4-204C-34OS MLGP5-204C-25OS MLGP5-204C-34OS MLGP6-204C-25OS MLGP6-204C-34OS MLGP8-204C-25OS MLGP8-204C-34OS	MLGP4-204C-30OS MLGP5-204D-30OS MLGP6-204D-30OS MLGP8-205A-31
NAS and GP® SHEAR/TENSION LOCKBOLTS	5/32 3/16	NASS05-2581-12 NASS05-2581-23 NASS05-2581-48 NAS06-2581-12 NAS06-2581-48 NAS08-2581-12 NAS08-2581-48 NAS10-2581-12 NAS10-2581-48 NAS12-745B-12 NAS12-756-48	NAST05-2581-12 NAST05-2581-23 NAST05-2581-48	NASS05-204C-25O NASS05-204C-30O NASS05-204C-34O NAS06-204C-25OS NAS06-204C-34OS NAS08-204C-25OS NAS08-204C-34OS NAS10-205D-31 NAS12-205A-31	NAST05-204C-20O NAST05-204C-30O NAST05-204C-34O NAS06-204D-30OS NAS06-204D-30OS NAS08-204D-30OS NAS08-205B-31
MGP® (MILLIMETER) LOCKBOLT	4mm 5mm 6mm 8mm 10mm	MGP4-2581-23 MGP5-2581-23 MGP6-2581-23 MGP8-2581-23 MGP10-2581-23	MGP5-2581-48 MGP6-2581-48	MGP4-204C-25OS MGP4-204C-34OS MGP5-204C-25OS MGP5-204C-34OS MGP6-204C-25OS MGP6-204C-34OS	MGP4-204C-30OS MGP5-204D-30OS MGP6-204D-30OS
MULTI-GRIP LOCKBOLT MAGNA-GRIP® and MAXLOK®	3/16 1/4 5/16 3/8	MG06-745-24 MG08-745-24 MG10-756-28 MG12-756-28	MG06-745-48 MG08-745-48		
MULTI-GRIP STRUCTURAL BLIND RIVET	1/4 5/16 3/8	**MSL08-752A-21 MSL10-353-28 MSL12-353C-28			
OVERSIZE STRUCTURAL RIVET	1/4 5/16 3/8	OS08-353A-48 OS10-756-26 OS12-756A-26	OS10-756-48 OS12-756A-48		
BLIND BOLT (SINGLE ACTION) WITH OR W/O DRIVE WASHER	5/32 3/16 1/4	SB05-745C-23 SB06-745B-23 SB08-755-23	SB05-745C-48 SB06-745B-48 SB08-755-48	***SB05-751C-54RA ***SB06-751B-54RA ***SB08-713A-58RA	SB05-204D-27OS SB06-204D-27OS SB08-204D-27OS SB08-205A-35 SB10-205A-35 SB12-205A-35
BLIND BOLT (SINGLE ACTION) WITH DRIVE WASHER	5/32 3/16 1/4	UBB05-745C-23 UBB06-745B-23 UBB08-755-23	UBB05-745C-48 UBB06-745B-48 UBB08-755-48	***UBB05-751C-54RA ***UBB06-751B-54RA ***UBB08-713A-58RA	UBB05-204D-27OS UBB06-204D-27OS UBB08-204D-27OS UBB08-205B-35 UBB10-205B-35 UBB12-205A-35

ASP®, BOMB®, LGP®, C6L®, GP®, MLGP®, MGP®, and MAGNA-GRIP® ARE REGISTERED TRADEMARKS OF ARCONIC INC. AVBOLT®, AVDELOK®, and MAXLOK® ARE REGISTERED TRADEMARKS OF AVDEL UK LIMITED. MAXI-BOLT® IS A REGISTERED TRADEMARK OF CHERRY AEROSPACE FASTENERS.

**GAGE BILT CERTIFIES THE GB756 WILL INSTALL THE ABOVE FASTENERS**

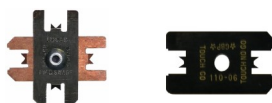
See [www.gagebilt.com/nose\\_assemblies.php](http://www.gagebilt.com/nose_assemblies.php) for nose assembly information (data sheets)

***ALL OFFSET 204 SERIES NOSES REQUIRE 353204 ADAPTER WITH 756152 STROKE LIMITER.
***ALL OFFSET 205 SERIES NOSES REQUIRE 745205 ADAPTER WITH 756153 STROKE LIMITER.
***NOSE REQUIRES 745751 ADAPTER.
***-54RA RIGHT ANGLE SERIES NOSES REQUIRE 745751 ADAPTER WITH 756155 STROKE LIMITER.
***-58RA RIGHT ANGLE SERIES NOSES REQUIRE 745751 ADAPTER WITH 756152 STROKE LIMITER.

NOTE: THE LAST 2 DIGITS OF THE NOSE ASSEMBLY REPRESENTS THE LENGTH THE NOSE EXTENDS FROM THE TOOL. I.E. -20 = 2.0 INCHES

Rev. 4/20

**GAGE BILT ALSO SUPPLIES PIN & COLLAR  
SWAGE INSPECTION GAGES TO CERTIFY  
CORRECT SWAGE INSTALLATION.**



**Grip Gage #GB105093**  
For NAS LOCKBOLTS and blind fasteners  
(Sold Separately)

